



OKLAHOMA

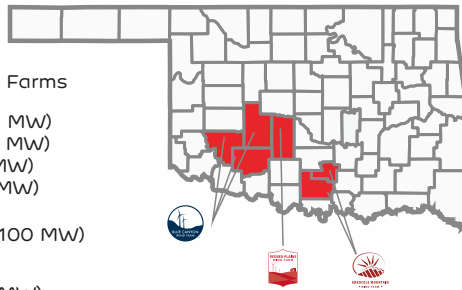
EDP Renewables is a wind industry leader in Oklahoma. The company's footprint in the state includes Arbuckle Mountain Wind Farm, Redbed Plains Wind Farm, and four phases of the Blue Canyon Wind Farm.

Counties with Operational Wind Farms

Blue Canyon I Wind Farm (74.25 MW)
 Blue Canyon II Wind Farm (151.2 MW)
 Blue Canyon V Wind Farm (99 MW)
 Blue Canyon VI Wind Farm (99 MW)

Arbuckle Mountain Wind Farm (100 MW)

Redbed Plains Wind Farm (99.1 MW)



622.55 MW in Oklahoma



EDPR's Oklahoma wind farms produce enough electricity to power more than **139,000** Oklahoma homes.¹

Economic Benefits



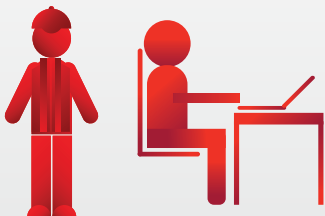
Our Oklahoma projects represent a capital investment of approximately **\$1.2 billion**.²



Approximately **\$20.5 million** in cumulative payments to local governments through 2019.³



More than **\$30.8 million** paid to local landowners through 2019.



Supported **844** jobs during project construction and created **72** permanent jobs in Oklahoma.



\$146.3 million spent within the state of Oklahoma through 2019.⁴



Median annual salary for a wind technician is **\$54,370**.⁵

About Us

EDP Renewables North America LLC (EDPR NA) and its subsidiaries develop, construct, own, and operate wind farms and solar parks throughout North America. Headquartered in Houston, Texas, with 52 wind farms, eight solar parks, and seven regional offices across North America, EDPR NA has developed more than 7,300 megawatts (MW) and operates more than 7,000 MW of renewable energy projects. With more than 700 employees, EDPR NA's highly qualified team has a proven capacity to execute projects across the continent.

EDPR NA is owned by EDP Renováveis, S.A. (EDP Renewables or EDPR), a global leader in the renewable energy sector and the world's fourth-largest wind energy producer. With a sound development pipeline, first-class assets, and market-leading operating capacity, EDPR has undergone exceptional development in recent years and is currently present in 14 markets (Belgium, Brazil, Canada, Colombia, France, Greece, Italy, Mexico, Poland, Portugal, Romania, Spain, the United Kingdom, and the United States). Energias de Portugal, S.A. ("EDP"), the principal shareholder of EDPR, is a global energy company and a leader in value creation, innovation, and sustainability. EDP has been included in the Dow Jones Sustainability Index for 13 consecutive years.

For more information, visit
www.edpr.com or www.edprnorthamerica.com

Wind Power In Oklahoma⁷

Total Installed Wind Capacity: **8,172 MW**

State Ranking for Installed Capacity: **3rd**

Wind Projects Online: **45**

Number of Wind Turbines: **4,013**

Percentage of In-State Energy Production: **34.6%**

Equivalent U.S. Homes Powered: **2.6 Million**

Wind Industry Employment: **6,001 to 7,000**

Wind Manufacturing Facilities: **7**

Total Project Investment: **\$15.2 Billion**

Annual Land Lease Payments: **\$48 Million**

¹Power generation calculated using a 35% capacity factor for wind. Household consumption based on the [2018 EIA Household Data monthly average consumption by state](#).

²Assumes the average cost of an installed wind farm is \$1.6 million/MW for projects built in 2017, \$1.7 million/MW for projects built between 2012 and 2016, and \$2.2 million/MW for projects built before 2012. Based on [U.S. DOE 2017 Wind Technologies Market Report](#) and [U.S. DOE 2015 Wind Technologies Market Report](#).

³Cumulative local government payments from 2010 through 2019.

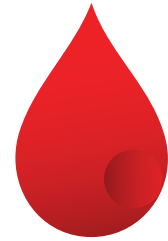
⁴Includes vendor spending, property taxes, landowner payments, and wages from site jobs. These numbers are presented for example purposes only, and actual payments may vary.

⁵Based on 2018 average wages from [Bureau of Labor Statistics for wind technicians](#).

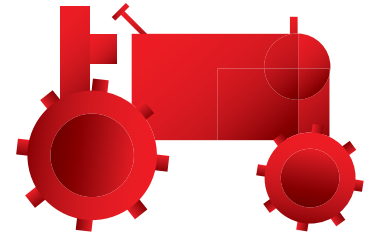
⁶Assumes 0.58 gallons of water consumed per kWh of conventional electricity from [Leo Han & Elgowainy, 2016](#).

⁷Statistics provided by [AWEA State Wind Energy Fact Sheets](#).

⁸Based on [2019 AWEA Wind Powers America Annual Report](#).



EDPR's Oklahoma projects save more than **1.1 billion** gallons of water each year.⁶



EDPR's projects are compatible with other land uses.



POWERING THE USA
Wind is the top renewable energy source in the U.S., supplying 7 percent of all electricity.⁸



EDPR's clean energy projects provide energy security and help diversify supply.



renewables

EDP Renewables

Blue Canyon Wind Farm O&M Office
3109 State Highway 19 • Carnegie, OK 73015
P: 580-654-1955 • F: 580-654-1949