

Version 04. June 2024



# Suppliers Sustainability Guide

---

Construction Works – Quick Guide

# About this guide

EDPR's market leadership, based in value creation capacity, innovation and relationship with its stakeholders, is much influenced by the performance of its suppliers.

EDPR bases its relationship with suppliers on trust, collaboration and creation of shared value, privileging a partnership approach focused on transparency and sustainability.

Sustainability is a central part of EDPR's mission, vision and values, not only because it is a renewable energy company but for the environmental, social and economic best practices throughout its entire value chain.

Accordingly, EDPR's procurement process is developed in the framework of the Sustainable Procurement Policy, which extends to EDPR's suppliers and service providers, both direct and indirect.

EDPR has defined procedures to ensure the several aspects that fill in with the company sustainability related policies applicable to the supply chain, namely the environment, health & safety, as well as the management and mitigation of any type of sustainability risks in the supply chain.

These policies (available on EDPR's website at [www.edpr.com](http://www.edpr.com)), with which the supplier must become familiar, are:

- | **EDP Supplier Code of Conduct**
- | **Occupational Health & Safety Policy**
- | **Environmental Policy**

This Suppliers Sustainability Guide provides an overview of the sustainability requirements and commitments EDPR expects its suppliers to meet. EDPR suppliers' long-term sustainable development is crucial to their success and, consequently, to EDPR's.

# 1

---

## H&S and Environmental Requirements for Construction Suppliers

### 1.1 General considerations

The Contractor shall strictly comply with all laws, orders and rules, either local, municipal, regional, state, country or European (for this last, except for LATAM countries), licenses, authorizations and permits, which may apply to the execution of the works or provision of the services included in the scope of the Contract.

The Contractor shall adopt all measures required to comply with the rules in force in terms of Occupational Health and Safety, Environment Social, and Cultural assets. As a consequence of this engagement, the Contractor shall undertake the implementation of the necessary actions to mitigate the risks related to their activities, plan the necessary corrective and preventive actions, provide training and information about risks to its workers and the environment, as well as follow the

standards, internal codes and policies, procedures and rules provided by EDPR. Without detriment to the foregoing, the Contractor shall comply with its obligations regarding cooperation and coordination between contractors as required by law.

The Contractor is responsible for the Health and Safety of all employees, both its own and its subcontractors, and shall be committed to respect the environment, social, and cultural assets, working in the scope of the Contract execution. Taking into account the above, the Contractor must have an adequate preventive resource (number of H&S supervisors) based on the total number of workers they have in the field.

Likewise, EDPR will establish the minimum requirements related to H&S supervision that the contractors must carry on in their works. Also, if it is required the Contractor must have

specialized staff in monitoring the rest of the matters to ensure compliance with legal requirements and the provisions of this guide.

During the execution of the works, the contractor must provide access to the different work pits on demand of EDPR employee or other person performing inspection in the name of EDPR. Contractor is obliged to provide access to all HSE related documentation (ex. Work Manuals, MSDS, certificates) that are needed to assess if works are performed in accordance to HSE rules.

The Contractor shall provide proof to EDPR/H&S coordinator/Environmental Supervisor, according to the contractual terms, before starting the works or whenever requested to do so, of the following points:

| H&S plans that have to include detailed procedures for all the works that are considered high risk activities (work at height, load handling, electrical works, confined spaces, trucks loading/unloading activities, crane transfer between platforms and others that could be established in the regulations of the countries, emergency situations and evacuation and risk assessment.

| Evidence that, during the execution of the works, the Contractor acts with maximum respect for the environment, the local communities and the cultural assets, taking all the necessary measures to prevent any impact.

| Evidence that the Contractor is executing the Contract observing the local HSE rules and regulations.

| Evidence that, prior to the commencement of the works, the Contractor has provided to its workers

adequate training about the risks of the work that they shall perform. Also, workers have to be informed about Health and Safety measures regarding such work, the protective equipment to be used and the measures to adopt in emergency situations. A proof of this specific training must be provided to EDPR.

| Evidence that the personnel has the necessary knowledge and skills to act efficiently in case of an environmental emergency (spills, fires, etc.). Adequate materials and means shall be available for use in preventive and corrective in case situations that pose an environmental risk to the site or human health.

During the performance of the works, EDPR/H&S Coordinator/Environmental Supervisor/Social Supervisor will have the right to conduct Safety, Health and Environmental inspections at those locations where the Contractor may be performing the work. The Contractor is obliged to correct any irregularities detected during Health and Safety, Environmental, and Social inspections as soon as possible or within the deadline established by EDPR/H&S Coordinator/Environmental Supervisor/Social Supervisor.

EDPR/H&S Coordinator/Environmental Supervisor/Social Supervisor will have the right to stop the works until the hazards have been eliminated should it detect any manifest negligence with respect to compliance with the health and safety and/or environmental rules and regulations.

The Contractor must provide information on their environmental performance (waste generation and treatment, reused materials, removal of vegetation, water consumption, fuel consumption, environmental

incidents, etc.) whenever required by EDPR to demonstrate compliance with the requirements included in this guide.

## 1.2 Health and Safety requirements at EDPR facilities in construction

All people on site (workers and visitors) should be familiar with and follow the rules below:

| Contractor must implement Last Minute Risk Assessment routine in the project. It must be documented and daily reported to H&S Coordinator or Supervisor who shall supervise, in a sample way, the correct implementation of this register. The model corresponds to the principle of several questions to be answered, and the works can only start if the response of all questions is “yes”. If the supplier does not have its own procedure to carry out the LMRA, it can request support from EDPR.

| All workers of the contractor and its subcontractors must participate in the Toolbox Talks organized by the H&S coordinator for which their presence is requested. These Toolbox talks will include the different risks of the different activities (electrical risk, falls from height, how to act in the event of finding a wild or poisonous animal...).

| Observe the safety signalization; the marking of excavations corresponding to foundations must be located at a minimum distance of 1.5 m from the edge of the excavation. In the event that said excavation borders a path for people or vehicles to pass through, safety fencing must be used in said area.

| Usage of the machines, devices and equipment not according to the purpose is forbidden;

| Usage of the firefighting equipment and first aid not according to their purpose is forbidden;

| Entering to excavations is allowed only in through designed accesses;

| It is forbidden to pass under the hanging loads;

| In case of an emergency situation or incident it is necessary to immediately evacuate the danger area, keeping the attention on the hazards around us;

| All workers are obliged to use the necessary PPE's on the construction site, according to the H&S plan and the risk assessment, depending on the work they are performing. The minimum PPEs to stay in an EDPR construction site are safety boots, high visibility vest and helmet;

| Workers are obliged to follow the speed limit which is binding on site (30 km/h).

| It is forbidden to work and/or drive any vehicles under alcohol or drug influence;

| Is not allowed to park the vehicles in the working areas of machines; they should be stationed in the designated areas for this purpose.

| It is forbidden to use equipment by unauthorized people or without necessary certificates or trainings;

| If it is necessary to perform works during the night, proper lighting conditions for the works should be provided.

| Electrical devices must be properly insulated. Connectors of the electric circuit have to be kept in the ideal conditions;

| Access roads cannot be blocked during assembly of the crane and during works when it is necessary the space for the maneuver, must be accessible for the emergency vehicles;

| All works should be provided in the way, which do not create any additional hazards and don't disturb the works of other people.

For this purpose, the Contractor is committed to act according to the following requirements:

| Prior to the beginning of the works, the Contractor must facilitate the company, employee and equipment documentation required by EDPR/H&S coordinator, as well as that of its subcontractors, through Safety document management tool. Said documents must include the necessary HSE guidelines to ensure that the work is carried out safely for both people and the environment and must be validated by EDPR or its representative prior to the start of work.

| Contractor workers and its subcontractors' workers must complete the minimum required training based on the work they will be conducting and as requested by EDPR, through its web tool. It must be taken into account that GWO-certified training will be required in the case of work at height training for working in wind turbine. Also, the GWO modules "First aid", "Fire protection" and "Load handling" must be included. Apart from that, the contractor must take into account the specific mandatory certifications in each country.

| Additionally, in Portugal, all workers that carry out construction, operation, maintenance or demolition works at EDPR facilities shall possess a Basic Safety Training (BST) certificate,

acknowledged by EDP. In Italy, the workers must be compliant with the H&S training required by Legislative Decree n. 81/08.

| In the event of a near miss or accident, the Contractor, once has stopped the work and/or isolated the area to prevent its consequences from repeating or extending further, shall notify the event immediately (by phone, verbally or by e-mail, etc.) to the EDPR person responsible for the installation or the EDPR person responsible for the supervision/management of the work.

| Next, the Contractor must send a Near Miss/Accident Report within a maximum period of 24 hours. Said report must include at least the what, how, where and when the injury/material damage occurred, as well as the personnel/equipment/facilities affected and all the reliable and relevant information available to understand the nature of the event.

| Next, and before the following 72 hours and through the same communication channels, the Contractor will send EDPR a final Near Miss/Accident Investigation Report. The contents of the investigation shall include, among others, a detailed description of the incident or event, witness statements, identification and analysis of the root cause, conclusions and action plan related to the root causes analyzed, as well as photographs of the near miss/accident. EDPR reserves the right to verify the information provided by the contractor, who shall at all times cooperate with EDPR in this task.

| The Contractor must notify to EDPR as soon as possible of any incident or near miss as well as of any unsafe acts or conditions that may arise in the facility areas of EDPR.

| If the use of cranes is necessary, with sufficient time before the start scheduled for the works, the Contractor will provide the Construction Manager/H&S Coordinator/Safety document management tool with the working procedure and the crane manual. These documents must include the authorized wind speeds for each operation of the crane. In addition, the procedure must define the responsibilities of each figure involved in the work, in relation to decision making/supervision of work.

The cranes should be properly stabilized before the beginning of any intervention. The platforms where the cranes are going to be put must be tested previously, to verify if they have the necessary resistance to hold the loads in which are going to be exposed. A crane can only be assembled after its correct stabilization.

Before the start of load loading, all the safety systems must be tested, those systems should be working perfectly.

After the crane stabilization, an inspection and a record should be made that all safety conditions are met for the crane to operate.

The Contractor cannot leave the crane, in any case, if it is not in safety position.

| Prior to using chemical substances at the construction site, the list of chemical products must be sent to the EDPR Construction Manager/H&S Coordinator/Safety document management tool along with their material safety data sheets (MSDS/FSIPQ) in the local language.

| The Contractor shall only use tools, machinery and equipment that are adequate and technically suitable and that have valid documentation. The

Contractor must regularly inspect power tools and must remove them immediately if any defects are detected. Only certified portable tools with their corresponding CE/INMETRO and equivalents for other geographies marking will be used.

| The Contractor is obliged to have in the installation of the mechanical equipment for the handling of loads appropriate to the work to be carried out.

| The Contractor must verify that the limits required for vehicles – particularly heavy vehicles and cranes – to circulate in adverse weather or poor visibility conditions have been included in his risk assessment and that of its subcontractors. If said conditions and their corresponding measures have not been included in the risk assessment, the Construction Manager/H&S Coordinator may take the decision that is most appropriate in that respect, and may stop, if deemed appropriate, these vehicles from circulating until the weather or visibility conditions improve. The Contractor must accept this decision.

| Cars may only be used in roads meant for road traffic. Driving in the field, meadows, trenches, etc. is forbidden. Facilities that have special driving risks (with high slopes, areas where heavy snow is frequent, etc.) will require the use 4x4 off-road vehicles.

| Any vehicle transiting through EDPR EU&LATAM construction sites must be equipped with high visibility vests for the workers (no mandatory in EDPR NA). Additionally, if the legal regulations ask for it, any car transiting through the facility must carry a fire extinguisher.

| With respect to the transiting of heavy vehicles or large vehicles, the Contractor must prepare a

Heavy Vehicle Transit Plan for the Facility, which must indicate the paths vehicles must follow depending on the wind turbines that will be visited. The Heavy Vehicle Transit Plan must include a map showing the marked paths on which heavy vehicles will travel, as well as the necessary indications for the operator to drive safely. In the event that the Heavy Vehicle Transit Plan should identify any risk situations that require taking action such as, for example, towing, road base repairs, etc. all measures that must be taken must be included in the plan itself prior to the entry of the vehicle. The Heavy Vehicle Transit Plan must be provided in writing to the Construction Manager/H&S Coordinator/Safety document management tool for review prior to the beginning of the works. Heavy vehicles may not access the facility without the approval of said Plan.

| Cars that are used for transportation of tools and/or materials must have a separate transportation area from the passengers/driver zone. All gas bottles must be transported in a vertical position. Tools and materials transported in the car must be prevented from moving freely in the transportation zone.

| Ladders must be according to workload (kgs) and according to country regulations. Simple hand ladders will have a maximum length of 5 meters. The use of the safety harness will be compulsory for work over 3.5 meters high, measured from the point of operation to the ground, and whenever the job requires efforts or movements that can endanger the worker's stability.

| The use of trestle scaffolds is forbidden. The scaffolding may only be substantially assembled, disassembled or modified under the guidance

of a person with specific or professional training qualifying him/her for such task, and by workers who have received adequate and specific training for the foreseen operations. The person directing these operations must inspect the scaffolding before it is put into service, periodically during its use and after any modification, period of non-use, exposure to the weather, or any other circumstance that could have affected its strength or stability. In the case of scaffolds that have "CE" marking, this assembly plan can be replaced by the instructions of the manufacturer, supplier or vendor, and these operations may be overseen by a person who brings over two years' experience in this matter certified by the employer and with the corresponding safety training, at least for basic level functions.

Said person must inspect the scaffolding before its commissioning, periodically during its use and after any modification, period of non-use, exposure to the elements, or any other circumstance that could have affected its strength or stability. Because the scaffold is a work equipment, it should also be inspected periodically in accordance with the local legislation and by a qualified person. It should exist a record of the verifications.

| Regarding working at heights, when working above 1m it shall be installed barriers that reach minimum 1,1m railing and protected bar in the middle that avoid fall from height (Collective Protection Equipment). If barriers are no possible to install, there shall be dedicated other type of working at height protection. Preferably Collective Protection Equipment shall be applied and if no possible Personal Protection Equipment.

Contractor is obliged to assure that all employees which are performing work at height are:



- equipped with adequate and certified PPEs or necessary CPEs are fixed in place;
- equipped and familiar with work manuals for the works;
- properly trained for work at heights; in addition to the work at height GWO module, “First aid”, “Fire protection” and “Load handling” GWO modules must be included. Apart from that, the contractor must take into account the specific mandatory certifications in each country.
- in EDPR NA the contractor must provide certificates of training program equivalent to GWO training.
- subject of regular inspection of qualified employee (minimum once per week).

| The Contractor is obliged to provide the technical measures necessary to respond to emergency situations (such as fire extinguishers, first aid kit, etc.) and ensure that its workers have constant access to these (employee’s vehicles and work areas). In the event that any of these devices owned by EDPR are used, EDPR shall be notified immediately so that the supplies that may have been used/consumed may be replaced.

| The Contractor must have an operational defibrillator at EDPR facilities, as well as personnel with adequate knowledge and training in its use.

| If during the contract execution period the Contractor receives a safety alert notification from EDPR, the Contractor is obliged to relay said information to all its workers and their subcontractors working at EDPR facilities, as well as to deliver to the EDPR person responsible for the installation the signature sheet attesting to said communication.

### **1.3 Environmental requirements at EDPR facilities under construction**

The works performed during the construction phase of a facility are carried out in a natural environment. Remaining and performing work in said locations carries potential risks to the environment and the cultural assets.

The Contractor must act with respect for the Environment and local communities and take all the necessary measures to prevent any impact.

Any environmental or relationship with local communities-related doubts arising during the provision of the services shall be consulted immediately with the Environmental Supervisor/Social Supervisor and/or the EDPR Construction Manager.

The Contractor shall inform, with enough anticipation, about activities such as opening roads, cutting, pruning, restoration, concreting, etc., to proceed to communicate it to the competent body or contact persons from local communities and/or request the corresponding authorizations and to proceed with the coordination of the social accompaniment, as applicable.

The Contractor must provide information on their environmental performance (waste generation and treatment, reused materials, vegetation affected and restored, water consumption, fuel consumption, environmental incidents, environmental complaints, etc.) whenever required by EDPR to demonstrate compliance with the requirements included in this guide. The Contractor shall execute and/or provide the contracted works/services ensuring the

maintenance of the order and cleanliness in the worksite and its surroundings. Once finished, the area shall remain in the same conditions as before starting the work.

All waste generated, both hazardous and non-hazardous, shall be properly managed in compliance with the applicable legislation. The Contractor, as producer and owner of the waste generated during the execution of its activity, shall ensure the proper storage and management of waste, according to the applicable legislation in force.

Until delivered to an authorized vendor, waste will be temporarily stored in an area fit for this purpose (away from surface/ underground water and areas of natural interest), and properly conditioned indicating clearly the presence of waste while complying with all applicable regulations.

Waste will be managed guaranteeing the application of the hierarchy principle that prioritizes prevention, preparation for reuse, recycling or other forms of recovery, including energy recovery, being the disposal just an option previously agreed with EDPR.

The Contractor shall provide to the Environmental Supervisor all the documentation that evidences the authorization of the waste haulers/handlers, the final treatments to be applied to the different wastes, as well as any other aspect related to the proper management of waste (waste records, etc.). Following the frequency established by EDPR, the Contractor shall provide information regarding the quantities of waste generated, its final destination and any other information of interest.

The Contractor shall execute and/or provide the contracted works/services with maximum respect for the environment and the local communities, taking all the necessary measures to prevent any impact on vegetation and wildlife, watercourses, waterbodies, and soils, as well as to avoid air pollution, noise generation and visual impact. For that purpose, the Contractor is committed to act according to the following requirements:

| Occupy neither wildlife or vegetation sensitive areas nor protected habitats, to avoid affectation. Areas to be protected and the type of fences to be used should be clearly stated in the description of the works and remained at the periodical meetings.

| Wildlife entrapment effects shall be minimized by filling and closing ditches and foundations as soon as possible.

| Immediately notify Environmental Supervisor and/or EDPR Construction Manager in case of finding any injured or dead animal or abandoned animal remains (carrion).

| Limit the movement of vehicles and/or machinery to the strictly necessary to perform the works, only on designated areas and respecting the maximum speed of 30 km/h in Europe.

| Do not discharge any type of waste or wastewater.

| Any water withdrawal requires an authorization from the corresponding body and all applicable requirements shall be fulfilled.

| Always use water from an authorized source at the worksite.

| Ensure construction works do not hinder the drainage capacity of the streams, decrease the flow or affect the quality of the water.

| Do not light fires on the ground.

| The machinery parking areas and other areas destined for similar purposes, such as stockpiling of materials and other auxiliary services, shall be located in flat terrain and away from watercourses/bodies to prevent runoff from dragging the accumulated materials into the riverbed considering the zoning established for each project.

| Maintenance tasks and refueling operations of equipment and mobile machinery shall be performed in appropriate facilities for this purpose or carried out in an impermeable area far from surface waters, groundwaters and natural areas, taking all the necessary measures to prevent spills and ensuring the proper management of the waste generated.

| Extreme precautions in operations involving concrete to avoid spillage, especially in the case of work taking place near water courses.

| Take all necessary preventive measures when conducting operations that may cause a spill and/or fire.

| In case of an accident with environmental consequences, act immediately in a coordinated manner with EDPR to minimize and mitigate the damages. EDPR should be notified within 24 hours of the accident, and a Report: Action Plan should be submitted within 72 hours.

| When vegetation clearings are required, comply with the applicable requirements of the corresponding authorization, and see Annex I. HSE requirements for clearing, felling, and pruning activities.

| Keep vegetation clearing to the minimum required following EDPR instructions.

| Properly manage plant remains from land clearing and do not use herbicides or pesticides. Works for plant clearings should be carried out by specialized personnel and proper machinery.

| Minimize land occupation to the strictly necessary for the execution of the works, delimiting each area with visible elements.

| Schedule noisy activities to be performed near inhabited areas or areas sensitive for fauna during the most appropriate periods to avoid disturbances.

| Respect any cultural/archaeological assets that may exist in the surroundings of EDPR facility premises to avoid their deterioration or damage.

| Use materials that come from legally authorized quarries or from authorized facilities for the recovery of construction and demolition waste.

At the end of the works, the morphological and vegetal restoration of the land will be carried out and the contractor will provide information about morphological and plant affected area (detailed by affected species and protection status, if any), the morphologically restored and replanted area, as well as the number and species planted and/or transplanted.

# 2

---

## Change control

Edition	Date	Description of the main modifications
04	June 2024	<ul style="list-style-type: none"><li>• Clarifications about the Toolbox Talks and safety signage.</li><li>• Inclusion of minimum required trainings.</li><li>• Clarification of Near miss and accident reporting at EDPR construction sites</li><li>• Clarification about environmental requirements to contractors.</li><li>• Inclusion of HSE requirements for clearing, felling and pruning activities (Annex I)</li></ul>

# 3

---

## Annexes

### Annex I: HSE requirements for clearing, felling and pruning activities

#### Introduction

In EDPR projects, clearing, felling and/or pruning work is sometimes necessary to remove vegetation from the areas where it is required.

When this work is necessary, the Contractor:

- | Must request the pertinent authorization/ permit if it is entitled to do so.
- | Must comply with the applicable regulations on HSE matters, the environmental permit or license for the project, any administrative act that authorizes forest use (including the partial lifting of the ban on epiphytic flora) and pruning, and/or any EDPR additional requirement that might be properly communicated. Special attention will be paid to rules governing the applicable restrictions and

measures in areas and periods of high fire risk.

- | Will comply with and enforce the prohibition of any felling, pruning, clearing, shredding or other tasks that affect the vegetation, as long as there is no express authorization from the competent environmental authority.

- | Minimize the impact on natural elements following the guidelines in the corresponding environmental permit, as well as the regulations governing the natural area in question.

- | Will hire specialized personnel with experience in carrying out these tasks. The personnel must have a specific training:
  - In the mastery of tree felling techniques
  - In pruning techniques

- | Will ensure the follow-up of the necessary measures that guarantee the safety and health of the workers during the performance of vegetation removal tasks.

## Definitions

| Felling: cutting down operations of trees or tree masses whose definition is such that it implies that felling must be carried out from the base.

| Clearing: cleaning works in which there is only undergrowth, scrub, bushes, or, in the case of trees, their height does not exceed 3 meters.

| Pruning: removal of those branches of trees that can generate a negative effect such as, for example, impairing the continuity of the electrical service by not respecting the minimum safety distances.

| Forest clearance includes in general removal of trees, stumps and other debris, chipping and spreading.

## Execution of the works

Aspects to consider before executing the works

| Carry out a visit and delimit and validate the project by the competent technician.

| Carry out a survey of the area prior to carrying out the work by the competent technician in order to identify species requiring intervention, the quality of the land, the topography, the density of the tree and in general, the ecology of the site, such as the presence of hornet or wasps, as these aspects determine the quality and variety of the shafts that trees develop and affect the direction of tree fall, as well as the precautions to be considered. This prior reconnaissance work must include verification of the presence of vascular epiphytes so that they are managed in accordance with the measures required by the competent environmental authority.

| Verify the inventory and adequately mark:

- Vegetation requiring intervention in order to guarantee that it is the minimum essential and that it complies with the provisions set out in the relevant authorizations.
- Or sensitive vegetation that must be protected to prevent it from being damaged during the work.
- And manage invasive species known in the area to avoid spreading.

See [here](#).

| In areas of ecosystem importance or when specimens or formations of protected areas can be affected, follow environmental surveillance or ecological expert precautions.

| Carry out a kick-off meeting with the involved part to ensure roles and tasks of each and to share latest updates and clarify doubts.

| Coordinate with EDPR the tasks of informing owners and local communities prior to carrying out the works.

| Ensure a plan for the proper management of waste and the prioritization of its recycling / recovery.

| Identify the direction of tree fall, considering the natural direction of fall (according to the slope of the ground, inclination of the shaft, distribution of branches and buttress or plank roots at the base), the direction of the wind, the existence of nearby trees, the expected direction of selected felling and possible obstacles in the drop zone.

| Proceed to delimit the work area and the area of influence (at least twice the height

of the felled tree or up to four times in areas of dense vegetation or reduced visibility) are signposted appropriately; the area must be cleared of personnel and tools, including auxiliary accessways, areas for the collection of plant remains and areas with the presence of vegetation of interest.

| Determine the path through which the chainsaw operator and his helper will escape from the physical threat resulting from the falling tree (identification of escape routes). The escape route guarantees the safety of the people who are carrying out the felling work, who must move to a safe place the moment the tree begins its fall, at a prudent distance.

| In strong wind conditions and in the case of trees with large crowns consider that the wind can tilt the tree in the direction of its fall and may pose a risk to people; therefore, it is advisable to reschedule those tasks.

| If the felled specimen has creepers or lianas, these must be eliminated by means of a preventive and safe procedure, since they hinder directing the fall of the felled tree and increase the risk of accidents to workers.

| In case of excessive proximity to live power lines, contact the power line utility and agree on the execution process (conductor isolation or disconnection).

### **Aspects to consider during the execution of the works**

#### **General aspects**

| Restrict tasks to zones and volumes

authorized in the applicable environmental license and/or permits.

| Open up the least possible number of new access ways, therefore minimizing affection to plant formations and specimens of interest along their layout or disposition. If necessary, the opening of new access routes must always be confirmed by the EDPR team.

| Signal areas with potential risks of accident.

| There must always be present at site: spill kit, basins for small fuel deposits, combat fire kit (including water and powder extinguishers, fire beater, shovel, hoe in high-risk period or areas).

| Keep a record of information about the area, felled volume, species, and individual specimens, duly georeferenced, as established in the applicable licenses and/or permits. In any case, EDPR must be notified at a minimum about the plant surface affected and restored, the number of new and/or transplanted specimens, and the quantity of wastes generated.

| Conveniently direct the fall of selected trees to prevent damage to other trees found outside of the limits of areas requiring intervention.

| Execute the measures or actions necessary for the protection of plant and wildlife present in the zones where activities are executed, according to the applicable Environmental Management/ Surveillance Plan and/or permits/regulations.

| Have available a specialist that supervises the layout and felling work in marked sensitive areas.

| Collaborate with EDPR in conducting

the inspections required in the Suppliers Sustainability Guides.

| Forbid the presence of people near shredding or clearing machines (safety distance perimeter with a minimum radius of 15 meters).

| No felling, pruning, or clearing work will take place in case of electrical storms as well as in the presence of strong and gusty winds.

| Work near power lines with a risk of electrical arc of electrical contact must be performed under special conditions of network operation, normally applying blocking of automatic reclosers.

| When needing to climb a tree either to place retention devices such as ropes, tractels or similar, or to use a chainsaw, the worker shall be qualified to perform work at heights and be equipped with the necessary means for the task, in particular, safety harness and lifeline or equivalent safety devices.

If the use of ladders is necessary to climb the tree, the ladders must be safely fastened and secured using ropes or clamps, achieving stability both at its base and at the top end of the ladder. Ladders shall be equipped at their base with horizontal stabilizers.

| When working alongside chainsaw operators, for example to mark the cut lines, the following shall be considered:

- In felling work, the distance that must be kept between the chainsaw operator and another worker must be at least equivalent to double the length of the felled tree.
- In mitre sawing operations, a worker working next to a chainsaw operator, for example to mark

the cut lines, must keep a minimum distance of 5 meters from the chainsaw operator.

- When working with a chainsaw, it must NEVER be held or wielded above shoulder height.
- To kick-start the chainsaw, place it firmly on the ground and set the foot on the back handle.
- Verify that the chain is not in contact with any object. Do not start the motor while holding the chainsaw with one hand.
- Refuel the machine with the motor off and have an adequate fire extinguisher available and accessible and in the appropriate area to avoid potential spills.
- Kick-start the machine at a certain distance from the refueling location.
- Transport the chainsaw always with the motor off. Protect the blade with sheaths.
- Always cut using the bottom edge of the blade and towards the ground. Never cut the wood directly with the tip of the blade and avoid its top edge from striking or rubbing against any object.
- Cut pieces must never be held with the feet or by other persons.
- The material stock and waste generated must be stored in the appropriated area and quick managed thereof.

### Aspects related to machinery

| Machines and work equipment must:

- Be suitable for forestry work and carry the following compulsory documentation: instructions manual (in the operator's local language) and maintenance/inspection records and certificate of conformity.
- Be appropriate for the task in question to ensure that the affection caused is limited to the one referred in the project.
- Be in good operating use and have all its safety devices.



- Users of these equipment or machines must be trained for their use according by Law of the country or EDPR requirements.
- Place signs and rope off adequately whenever the activities interfere with the transit of vehicles or pedestrians.
- Always observe the rules on the prevention of fires associated with machinery. The machines must be equipped with fire extinguishers in accordance with the laws of the country.
- Comply with the manufacturer’s instructions as regards the stability of vehicles in slopes as well as the load limits.

#### **Aspects relating to protective equipment**

| As regards personal and collective protective equipment and tools used by operators, they must comply with the required in the permits and authorizations and with all of the requisites listed in the Suppliers Sustainability Guides.

| As regards personal protective equipment, the following will be considered for felling and pruning work and subsequent treatment of plant waste: hardhat with safety facial screen and hearing protection, cut protection safety gloves (especially fit for chainsaw operation if this equipment is used), safety mechanical resistant safety boots (with steel toe) against cuts by chainsaw, fall protection system, colored clothing, pants with safety interlining and cut-resistant clothing (jacket, pants and gaiters) when using a chainsaw, protective shin guards and reflecting vest.

| As regards collective protection equipment, the following will be considered when carrying out felling and pruning work and the subsequent treatment of plant waste: accelerator blocking

device, chain retainer device, anti-vibration device, anti-cut ropes, fire extinguishers, first aid kit, signaling tape, signaling cones and signs for work conducted on public roads. These measures will apply when using chainsaws and other cutting machinery such as brush cutters.

#### **Specific aspects**

| The elimination of large native adult specimens shall be minimized.

| In general, felling and pruning of fruit and ornamental trees, as well as crop species, will be avoided. When it is essential to do so, special care must be taken.

| The use of tools to be used during forest harvesting must be in accordance with what is authorized by the competent environmental authority.

| Clean cutting tools will be used so that they do not cause health risks and minimize the surface affected by the cut.

| Pruning will be carried out without the plant species suffering damage that impedes their viability, making clean cuts and in such a way that there is no accumulation of water. Pruning should always be done from the bottom of the tree upwards (See Annex I).

| Trees or bushes will always be cut at ground level. Once the tree is felled, it will be cut into pieces, cutting all the branches previously. To minimize the risks, cuts will be made with manual tools such as a saw or machete when the size of the branches allows it. The operator should always make the cuts from the uphill side of the

terrain, to see how the tree is balanced and in which direction it will move when making the cuts.

| In the case of trees with plank or tabular roots, the planks should be cut around the tree before felling starts.

| Low branches in the trunk that could hinder the work shall be pruned using traction chain cutting, removing first the upper branches, and moving downward to remove the rest.

| Branches shall be removed using an elevated platform whenever possible. In the absence of one and only in the case of healthy trees or trunks, branches can be removed by professionals with specific training in tree climbing techniques. Any job requiring climbing a tree shall only be permitted so long as there is at least another worker with the capacity and means to perform a rescue in case the worker working on the tree suffers an emergency.

| Branches shall be cut by means of cuts flush with the shaft's surface, to avoid damaging tree scars.

| If damaged, healing will be applied as needed.

| Due the nature of the growth of some trees, it is possible to identify specimens with a certain natural inclination or with abundant foliage on any given side. When these trees are very inclined, felling will be supported using levers to facilitate turning of the trees and ensure that trimming and pruning leave the tree compensated.

| In case of identifying specimens with rotting at the core, it is recommended

to fell the tree in sections, starting at the highest part and descending progressively until reaching the ground.

| Manual means shall be used for clearing tasks in places with significant erosional processes or with abundant regeneration or a high density of trees.

| The use of herbicides and pesticides shall be avoided. Exceptional use thereof must have the pertinent authorization.

| In all zones and especially in zones with high density cover and affected by the drought, special precaution must be taken when using mechanical means (clearing machines, chainsaws) that, on contact with some elements of the ground (pebbles, metals, etc.) could generate sparks and trigger fires. Likewise, in regions where periods of high fire risk are established, the presence and availability of a water-based fire extinguisher shall be guaranteed at a minimum. Furthermore, additional measures concerning the technical criteria and conditions of the region in question shall be implemented.

| If the presence of termites or nests of other insects is identified, the shaft shall be cleaned off to prevent that, at the time of felling, these may disturb the chainsaw operator.

| If the presence of mammals, bats or birds (owls, woodpeckers) is identified while pruning, stop work and seek advice from environmental/ecological specialists.

### Aspects to consider after completing the works:

Plant biomass remains shall be recovered whenever possible. The work area shall always be left free of clearing, pruning, or felling products. Operators shall proceed in one of the following manners:

| Shredding or chipping: in zones accessible to the machines used to perform this task, plant remains will be evenly spread on the ground to facilitate its natural degradation and quick incorporation to the soil, without leaving any remains on the vegetation of the area.

| Logging (size smaller than 30 cm): if shredding is not possible, the remains shall undergo logging and spreading on the ground in the same conditions as above.

| Should the local community request it, unprocessed plant remains shall be donated in logs sized less than 1 m. A written record providing proof of delivery of the wood and permitted uses shall be left, including a clear statement indicating that said remains cannot be sold.

| Should the above not be possible, plant remains shall be collected and managed adequately by an authorized vendor. Recovery shall be prioritized over elimination.

| In situ incineration will be avoided. If incineration is the only solution, it must be previously authorized by EDPR; the corresponding permits from the competent body shall be available and all necessary preventive measures shall be taken.

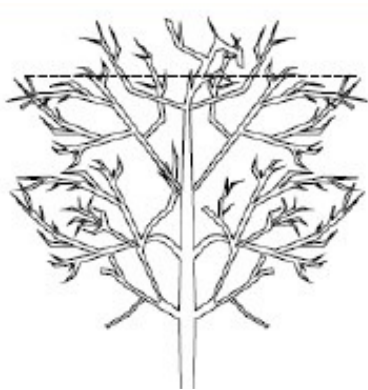
| The permanence of felling and pruning remains in temporary stockpiles on the ground shall be determined by the authorization from the competent body. Stockpiles shall be always placed in areas where they do not represent an obstacle for the movement of personnel and equipment related to the operation or for the community, and must be far from drainages, roads and housing.

| Agricultural practices that foster the onset of plagues and illnesses such as the incineration of waste in the field or the abandonment of unshredded branches of a diameter greater than 6m shall be avoided.

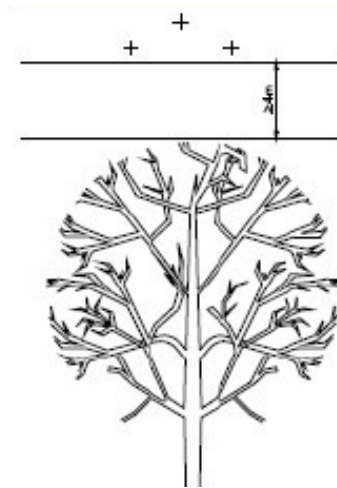
| Once clearing, felling and/or pruning tasks are finalized, the work area must be left in an adequately clean condition. The abandonment and/or discharge of any type of waste, especially those that could increase the risk of forest fires (lubricants, fuel, etc.) is prohibited.

## Annex I. Pruning methods

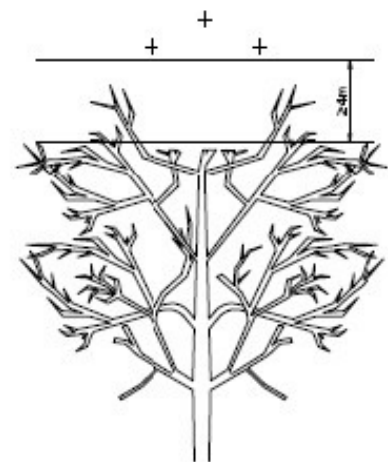
### Affection to trees



Before pruning



After pruning well done

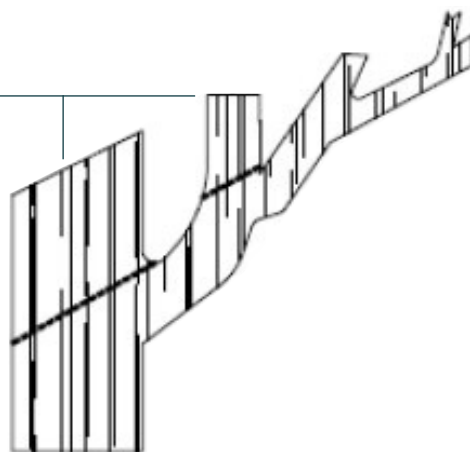


Poorly done pruning (with conductors too low)

### Pruning methods

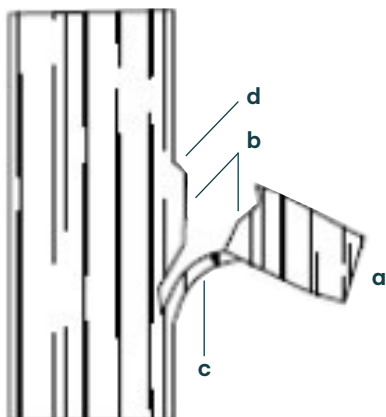
Inadequate pruning points

Adequate pruning points



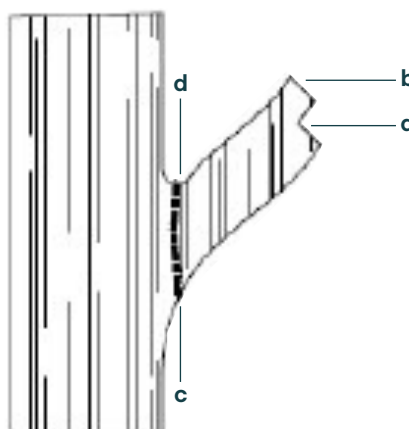
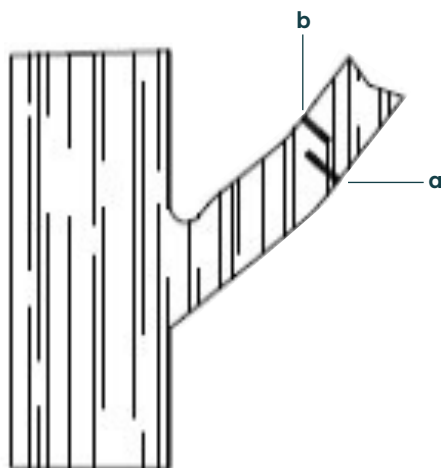
Correct way to prune the union with a lateral branch to form low-height canopies

## Pruning methods



### Incorrect cutting of a thick branch

(a) branch, (b) saw cut that has separated the branch, (c) piece of bark and wood gouged away from trunk, (d) branch union



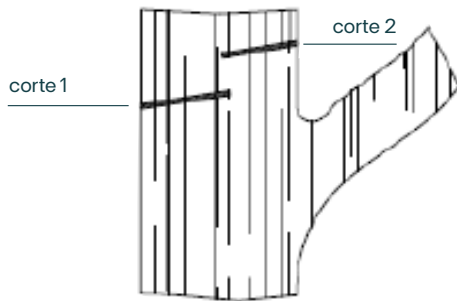
### Correct cutting of a thick branch

The first cut is made on the lower side of the branch at point (a) at about 150 or 300 mm after the final cutting point; the cut must penetrate until approximately halfway of the branch.

The second cut is made at point (b) at 25 or 50 mm before the cut at point (a), continuing until the branch falls off. The third cut is made at the trunk to remove the growing stump; point (c) indicates the position of the third cut.

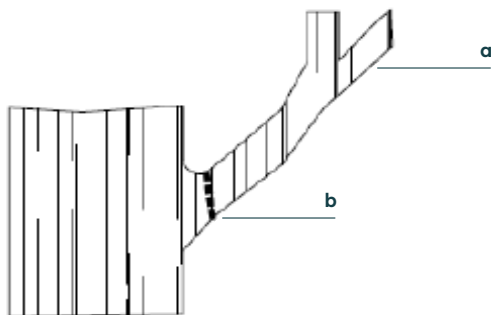
The union of the branch is shown in point (d). The stump must be held with the hand to avoid debarking the trunk. All final cuts must be made such that they allow rainwater to run off easily.

## Pruning methods



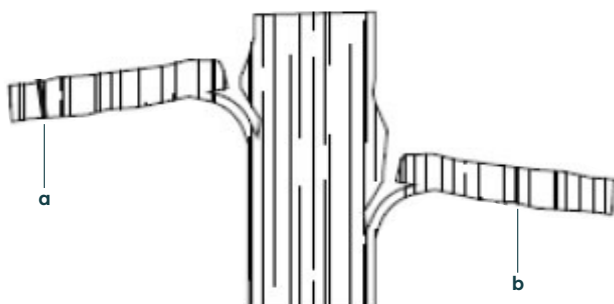
### Separating a vertical branch

If the branch to be cut is vertical, the cuts must be made at an angle of approximately of 30 degrees in order to prevent the accumulation of water on the cut surface, which would cause it to rot.



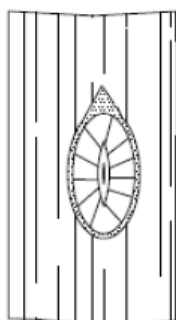
### Separation of an overhang of dry wood that constitute a threat to nearby living parts.

This branch was cut at point (a) but should have been cut at (b).



### Two other methods of cutting of a thick branch

Only one cut is necessary. The branch must be held using a taut rope firmly fastened at point (a) or using a prop firmly fixed at (b). Both the rope and the prop must remain inclined to keep the branch separated from the trunk at the time of cutting. If the rope or prop should be hung or supported on some existing branch, the latter must be well sheathed to prevent damaging it.



### Treating a tree scar after cutting a branch.

If the union has been removed and the top and bottom ends of the scar are very round or square, they must be made pointy, as indicated by the dotted lines.

If the union has not been removed, the operation to recut the scar is not so important. However, a scar trimmed on both ends is highly convenient to achieve good healing.

# Thank you!



## Suppliers Sustainability Guide Construction Works – Quick Guide

---

This document is owned by EDPR. Printed copies of this document may be outdated.  
Printing this guide: Please be mindful of the pages you print.  
Avoid waste, only print the pages you wish to read and print double sided.